





Access
underground
parking – close
to elevator

External works finished by 07-2024



View full complex



Basement only:

8m²

Flat only:

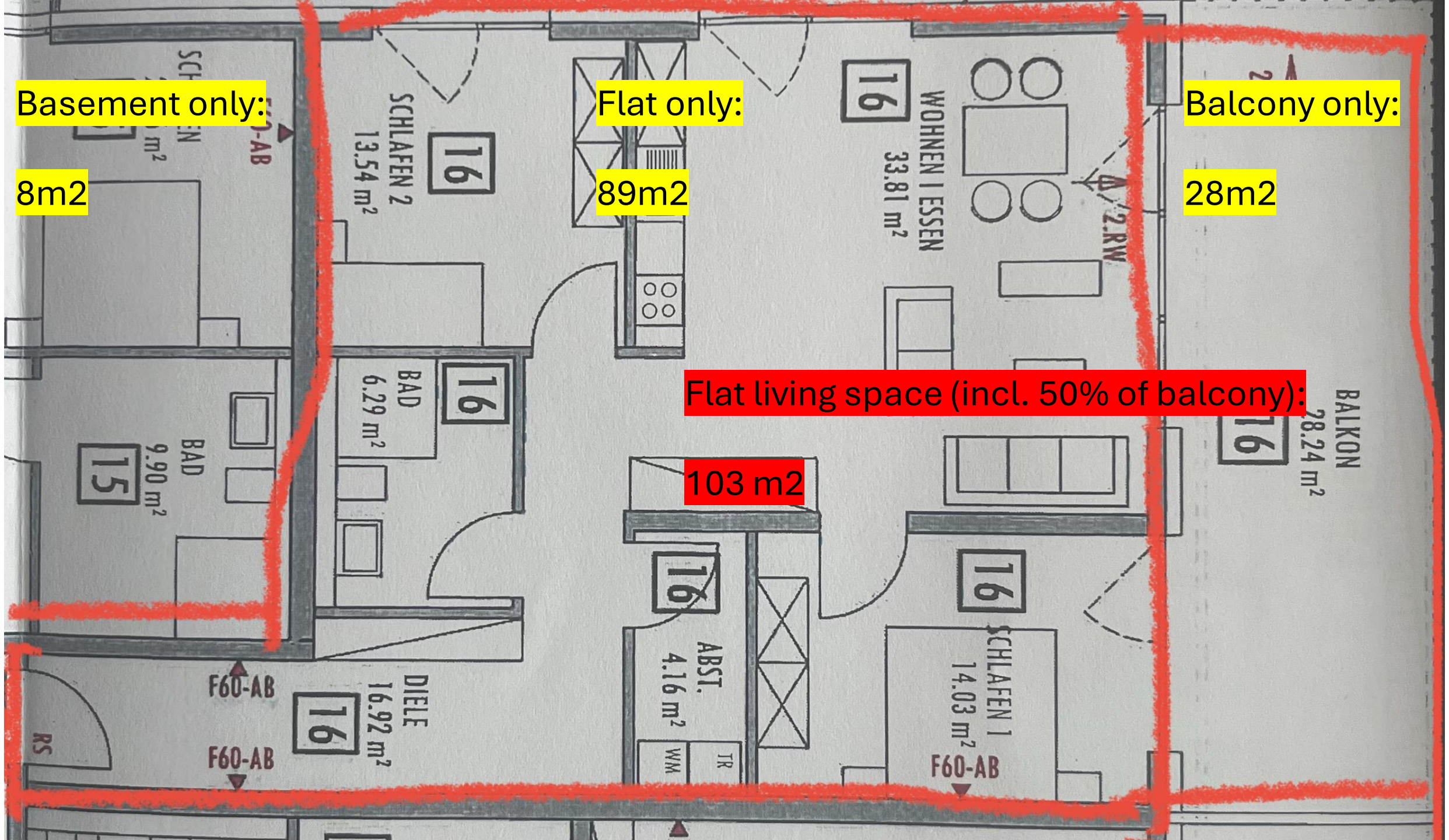
89m²

Balcony only:

28m²

Flat living space (incl. 50% of balcony):

103 m²





Balcony

28m²



Balcony

28m2



Living

34m2



Living

34m²

Kitchen

Living 34m2

34m2





Kitchen

Living incl.
KITCHEN

34m2



Kitchen

Living incl.
KITCHEN

34m²



Sleeping #1 (parents)

14m2



Sleeping #1 (parents)

14m2



Sleeping #2 (kids)

14m2



Sleeping #2 (kids)

14m2

Glas element

Bathroom

6,5m²





Pantry

4m²



Entry /
hallway

17m²